

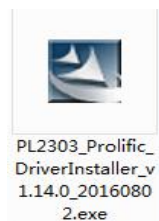
The Instructions of USB serial port cable driver installation

Note:

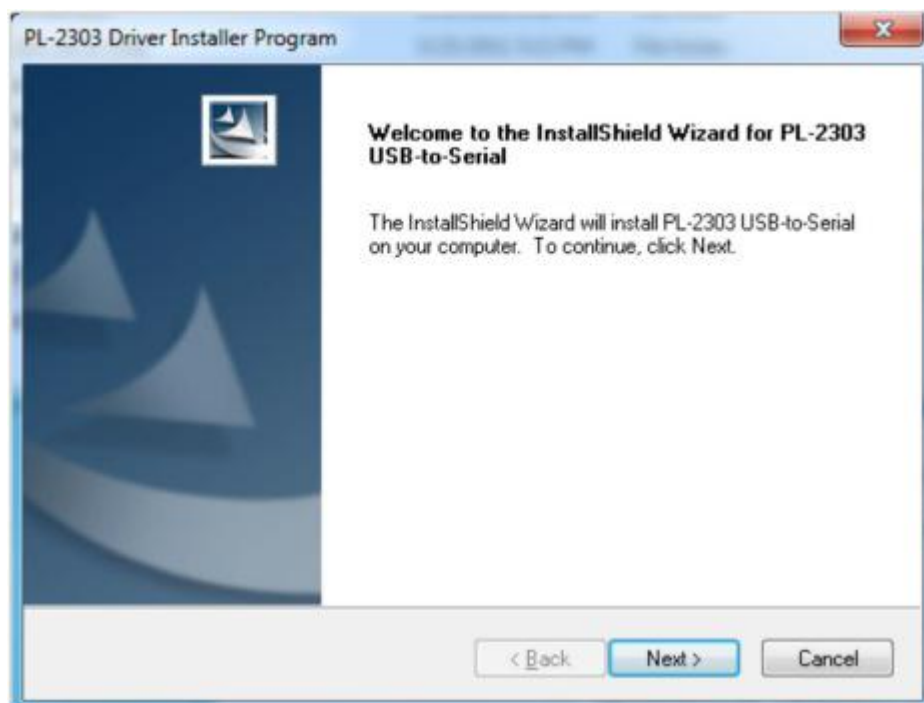
- First, run the Driver Installer Program before plugging in the USB to Serial adapter.
- If you already plug the device during the driver installation, you need to re-plug the device for Windows to enumerate the device and load the drivers installed.
- If your device is embedded to the system, you might need to restart the system (or click rescan hardware changes in Device Manager) to reload and install the driver.

1.Run the driver installation software;

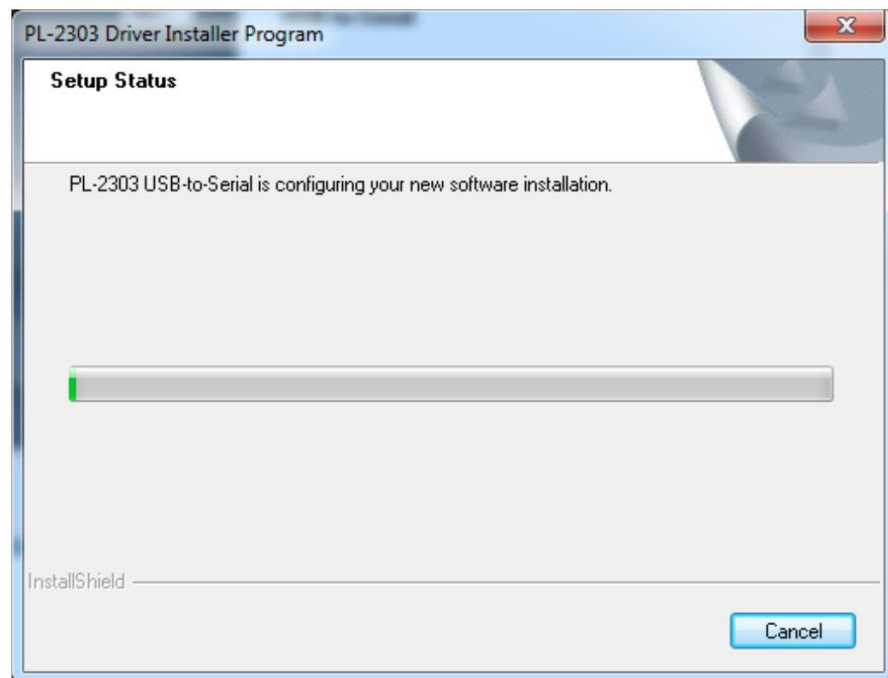
Power on your computer and boot to Windows. Run or double-click the PL-2303 Windows Driver Installer program.



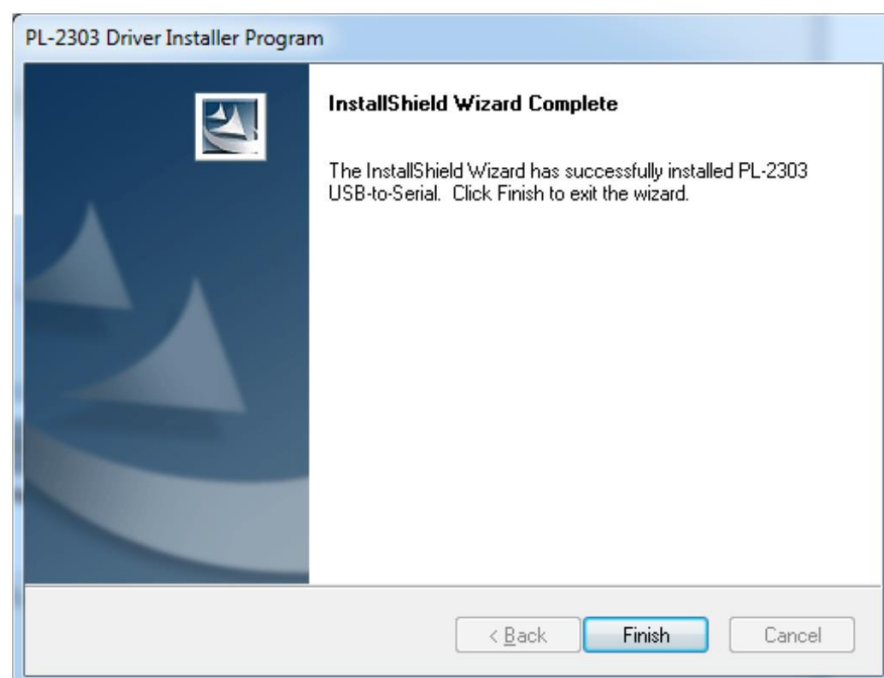
2. The InstallShield Wizard will be displayed to inform you that the PL-2303 USB-to-Serial driver will be installed on your computer. Click Next to continue ;



3. The PL-2303 Driver Installer program will then start to install the drivers needed ;



4. Click the Finish button to close the InstallShield program. If you have plugged the cable into the PC while running the setup installation, please unplug and replug the cable for the system to detect the device ;



5. Plug in the USB to Serial adapter to the PC USB port. Windows should detect the driver as Prolific USB-to-Serial Comm Port. Go to Device Manager and check for the “Prolific USB-to-Serial Comm Port” device and the COM port number assigned by Windows.

